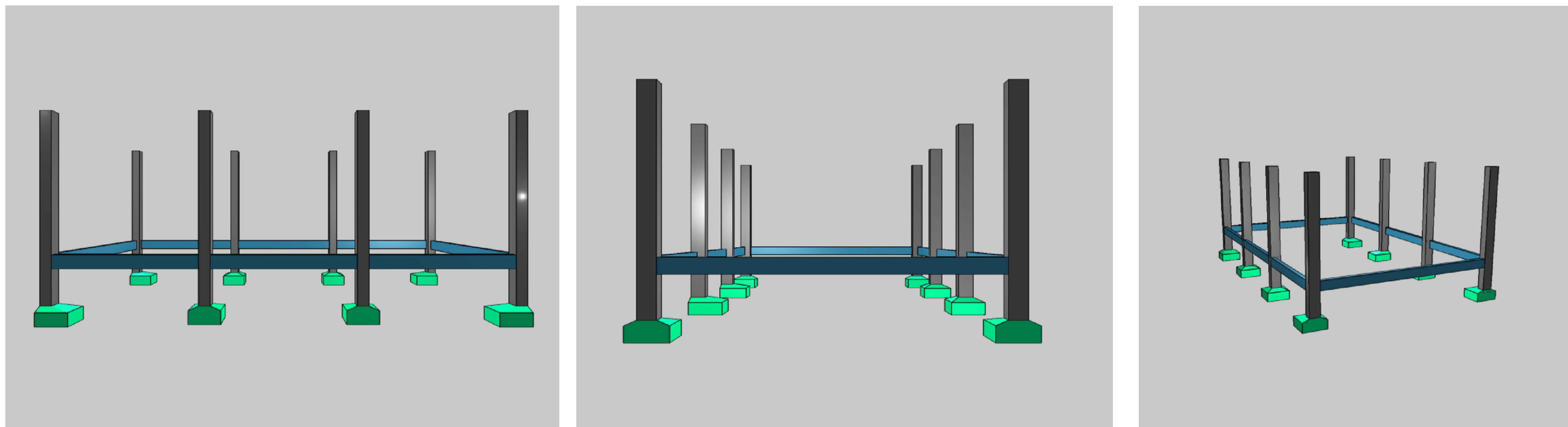


Planta de localização
Escala 1:50

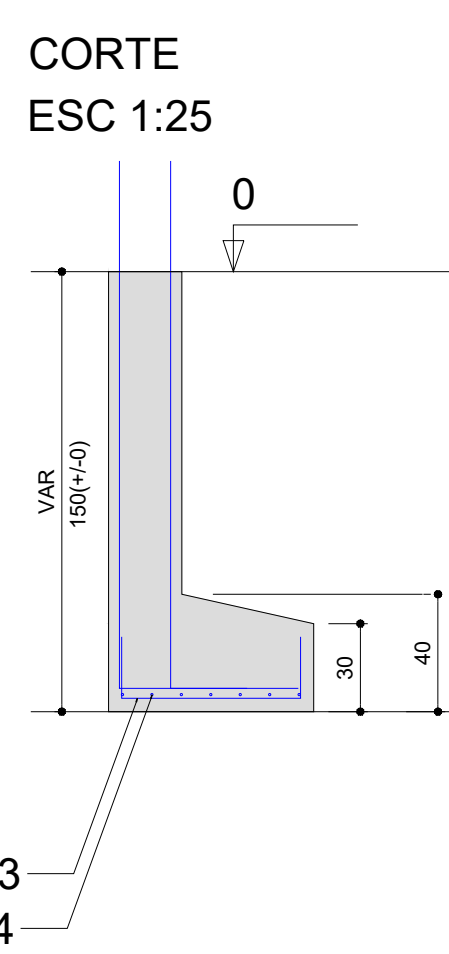
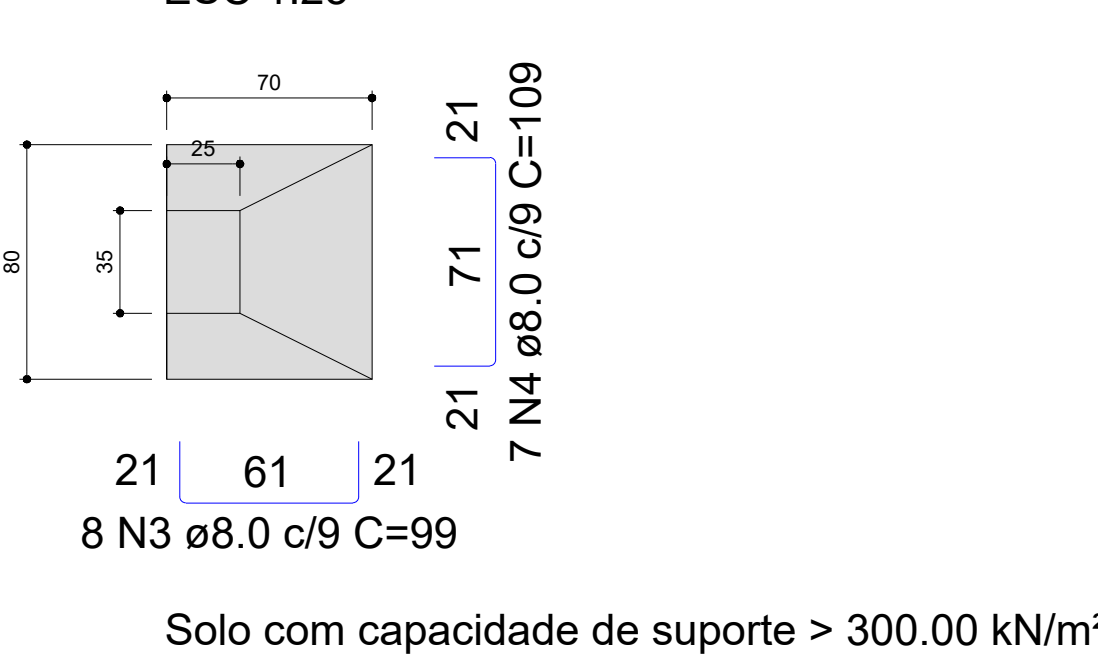


Pilar				Fundação							
Nome	Seção	X (cm)	Y (cm)	Carga Max. (kN)	Carga Min. (kN)	Lado B (cm)	Lado H (cm)	h0 / h1 (cm)	h1 / h2 (cm)	h2 / h3 (cm)	d' (cm)
P1	28x35	-492.67	346.78	24	24	70	80	30	40	150	150
P2	28x35	-151.67	346.78	23	23	80	70	30	40	150	150
P3	28x35	189.33	346.78	23	23	80	70	30	40	150	150
P4	28x35	530.33	346.78	24	24	70	80	30	40	150	150
P5	28x35	-492.67	-299.22	24	24	70	80	30	40	150	150
P6	28x35	-151.67	-299.22	23	23	80	70	30	40	150	150
P7	28x35	189.33	-299.22	23	23	80	70	30	40	150	150
P8	28x35	530.33	-299.22	24	24	70	80	30	40	150	150

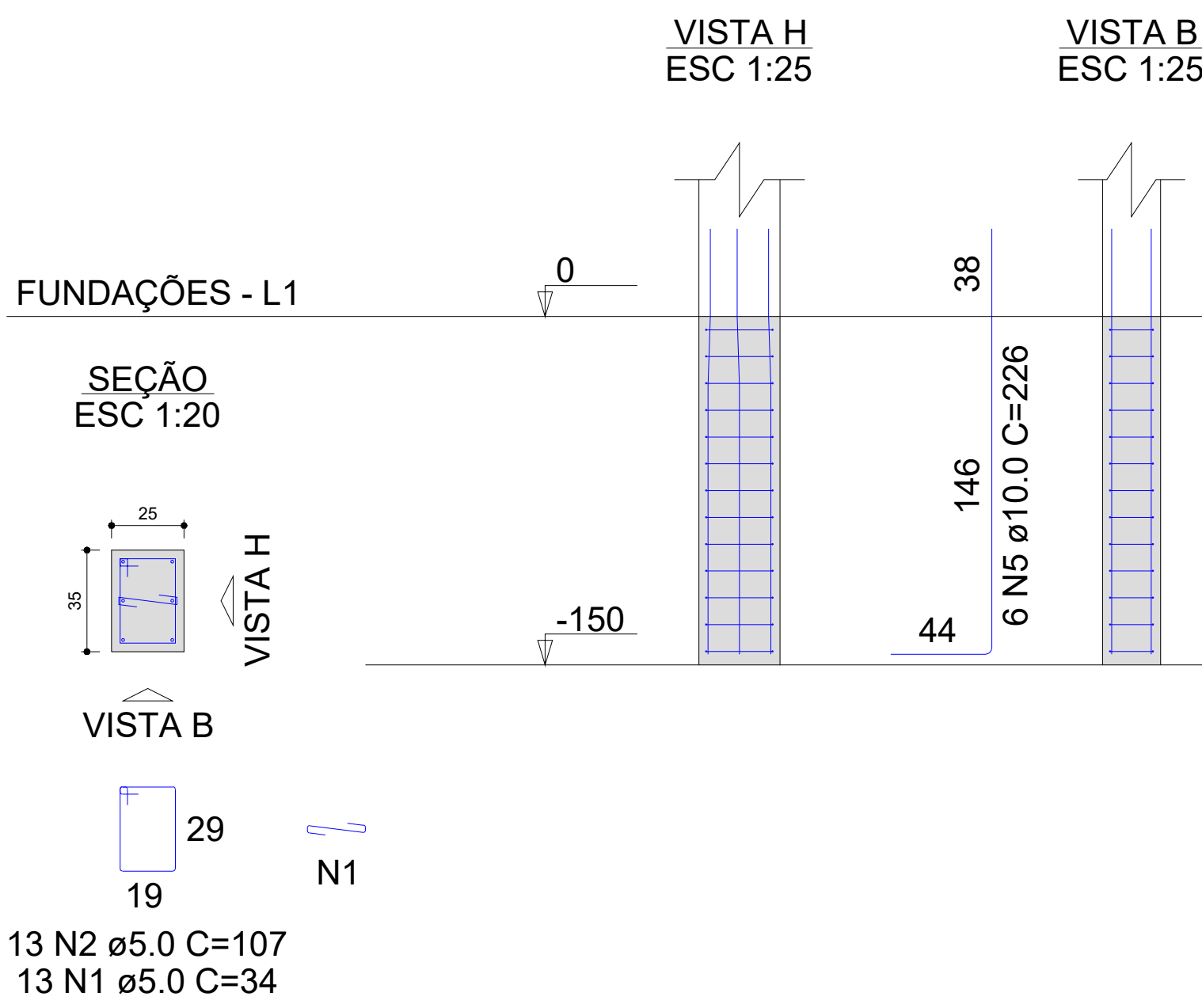
Localização no eixo X	
Coordenadas (cm)	Nome
-492.67	P1, P5
-151.67	P2, P6
189.33	P3, P7
530.33	P4, P8

Localização no eixo Y	
Coordenadas (cm)	Nome
346.78	P1, P2, P3, P4
-299.22	P5, P6, P7, P8

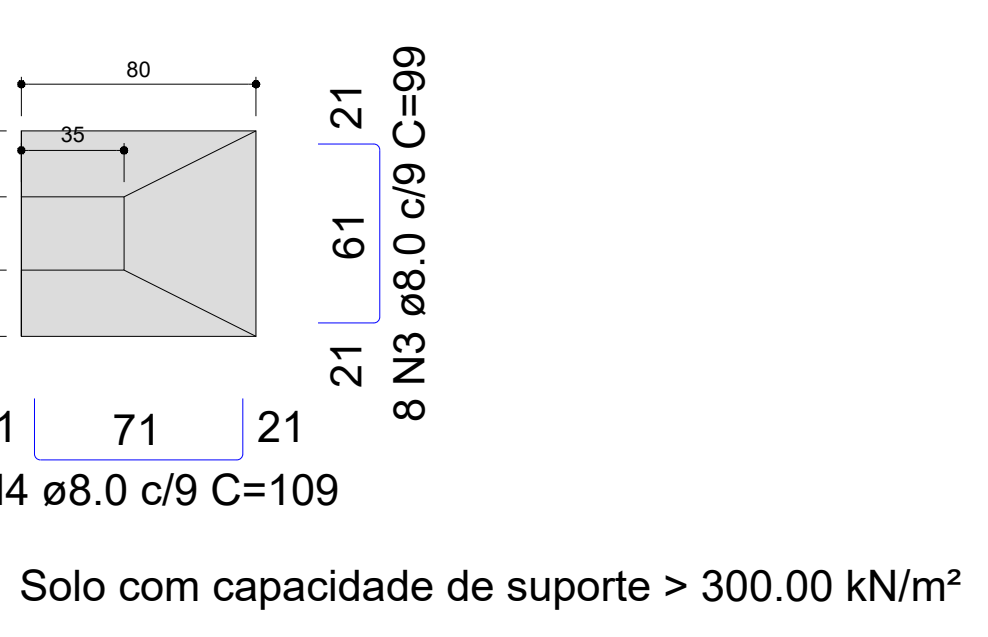
S1=S4=S5=S8
PLANTA
ESC 1:25



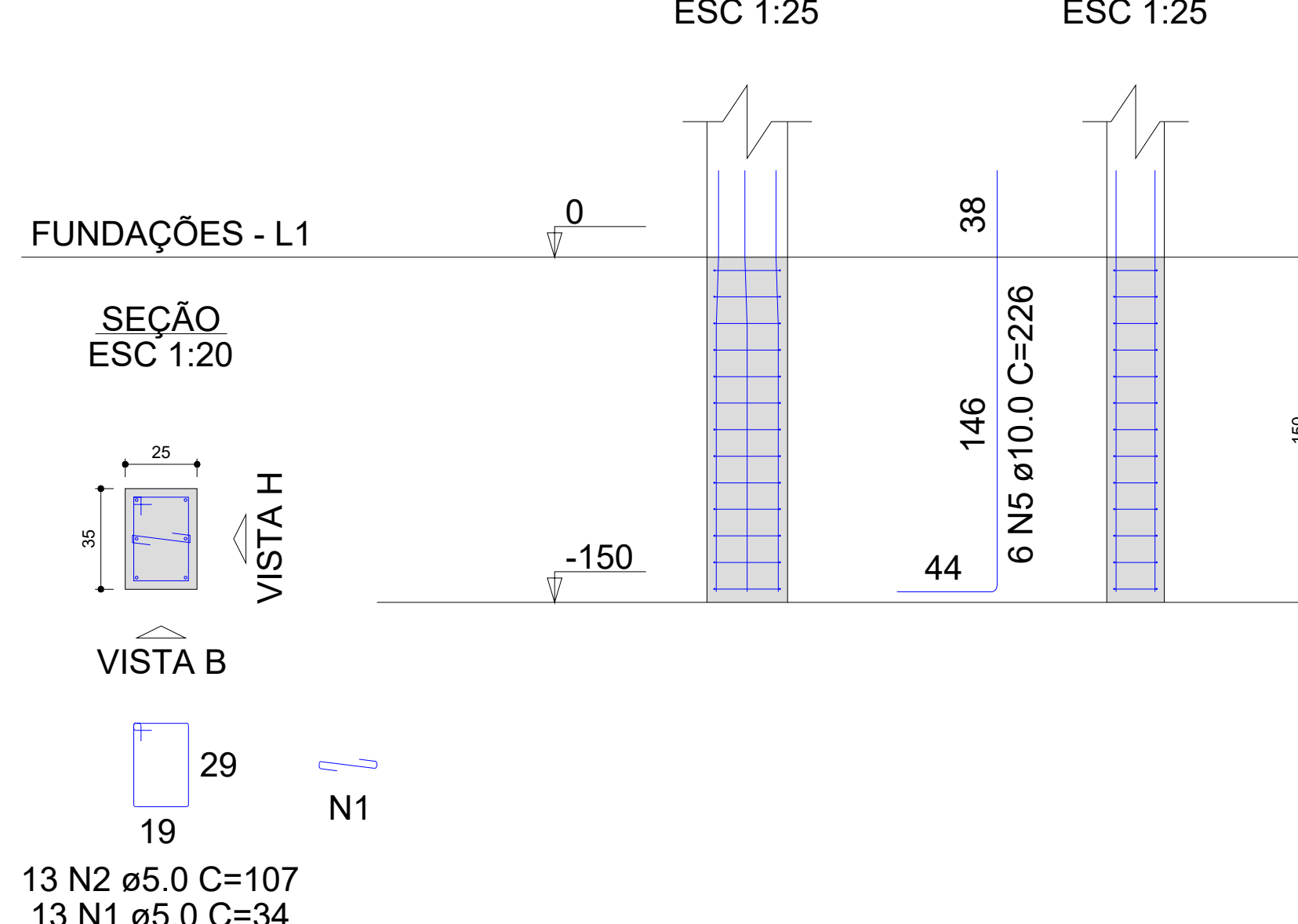
P1=P4=P5=P8



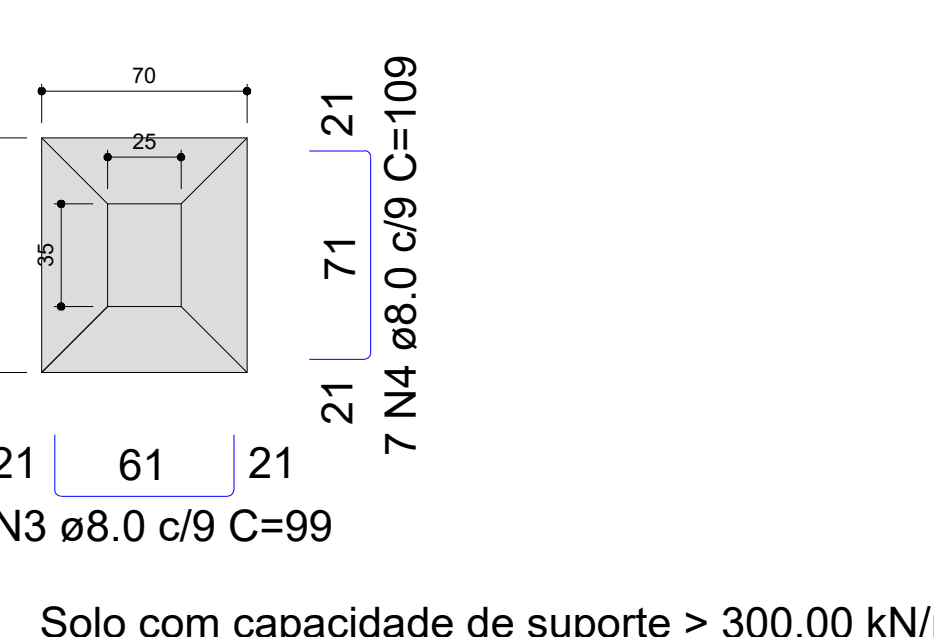
S2=S3
PLANTA
ESC 1:25



P2=P3



S6=S7
PLANTA
ESC 1:25

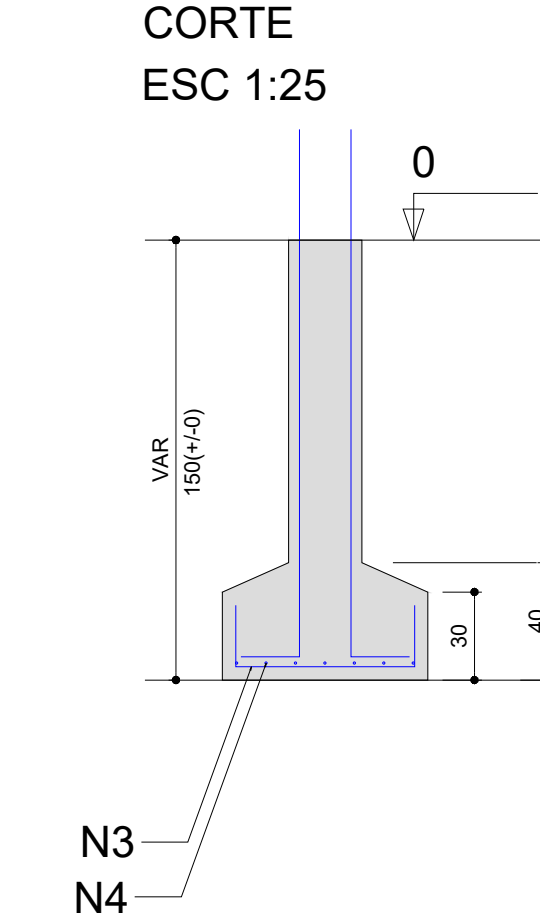
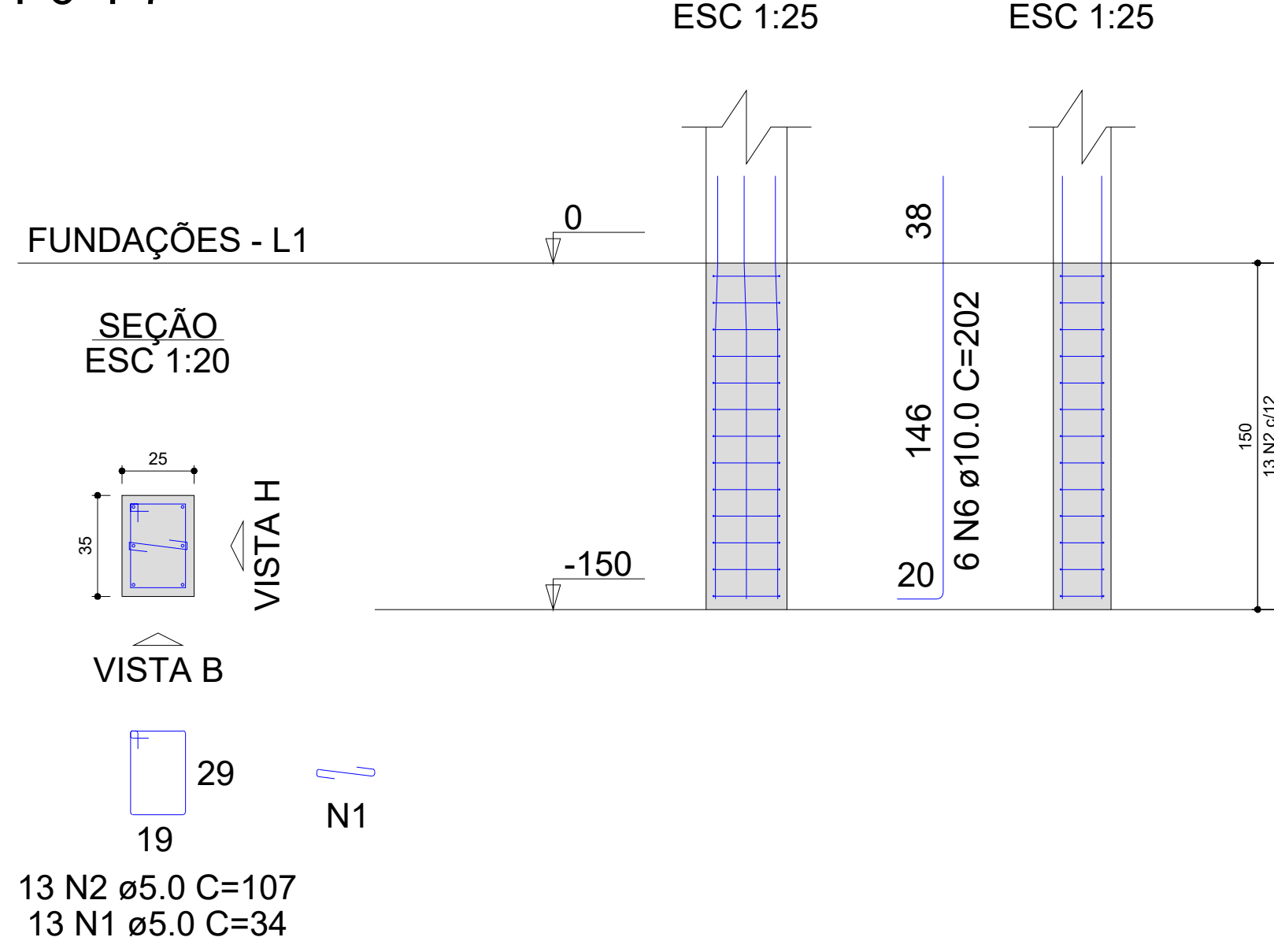


RELAÇÃO DO AÇO				
AÇO	N	DIAM (mm)	QUANT	C.TOTAL (cm)
CA60	1	5.0	104	34
CA50	2	5.0	104	107
	3	8.0	64	99
	4	8.0	56	109
	5	10.0	36	8136
	6	10.0	12	202

RESUMO DO AÇO			
AÇO	DIAM (mm)	C.TOTAL (m)	PESO + 0% (kg)
CA50	8.0	124.4	49.1
CA60	10.0	105.6	65.1
	5.0	146.6	22.6
PESO TOTAL (kg)			
CA50	114.2		
CA60	22.6		

Volume de concreto (C-25) = 2.35 m³
Área de forma = 18.22 m²

P6=P7



ESTRUTURAL			
PROJETO:	REFORMA E AMPLIAÇÃO DA ESCOLA NILA FERREIRA - EST. (COBERTURA)		
MUNICÍPIO:	FAGUNDES - PB		
ENDEREÇO:	AV. IRINEU BEZERRA		
PROPRIETÁRIO:	PREFEITURA MUNICIPAL DE FAGUNDES - PB		
RESPONSÁVEL	ASSINATURA	REVISÃO	DATA
PROPRIETÁRIO			
ENGENHEIRO			
PRANCHA	DESENHO	ESCALA	
01/03	INDICADOS	INDICADOS	

